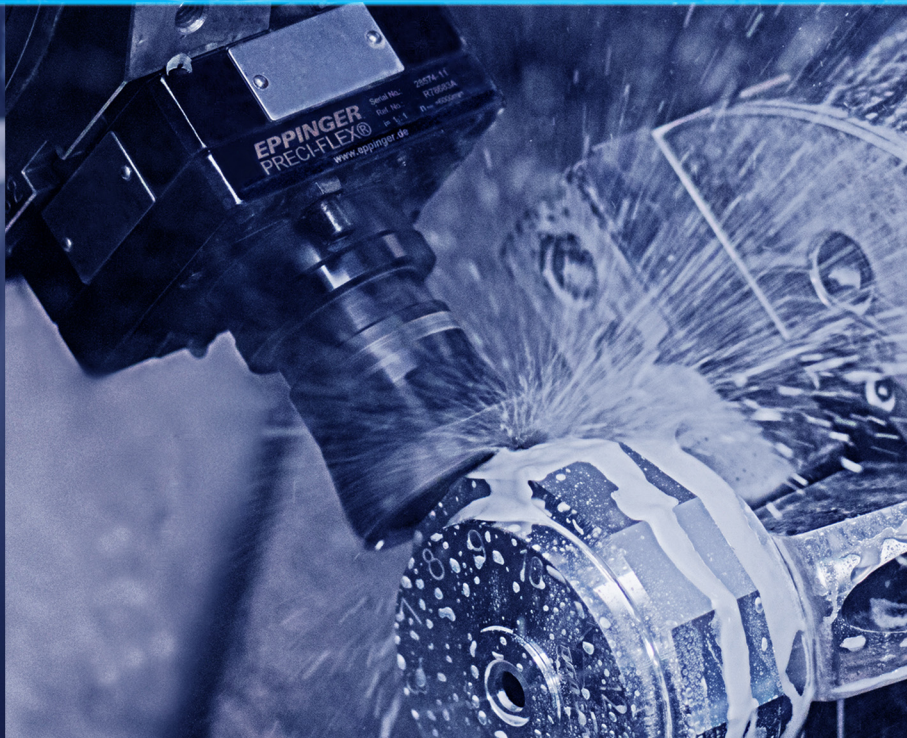




**EXSYS®** **EPPINGER**

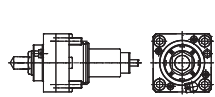
**Tooling Catalog**



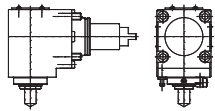
**SMEC** **SAMSUNG**  
**MACHINE TOOLS**

EXSYS Automation, Inc.  
15200 Citrus Country Drive  
Dade City, Florida 33523  
P : 352.588.4345 F : 352.588.4821  
[www.exsysautomation.com](http://www.exsysautomation.com)

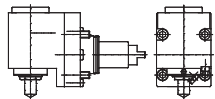
**BMT45**  
**SL15 (M)**



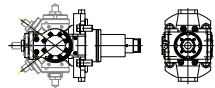
**7.073.120 External Coolant**  
**7.073.358 Internal Coolant**  
• Drilling and Milling Head  
• Axial, Straight, CC  
• Collet Chuck, ER20  
• **PRECI-FLEX®**



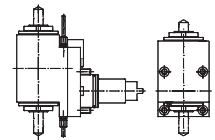
**7.073.267 External Coolant**  
**7.073.359 Internal Coolant**  
• Drilling and Milling Head  
• Radial / LH - RH, CC  
• Collet Chuck, ER20  
• **PRECI-FLEX®**



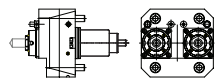
**7.075.005 External Coolant**  
**7.075.875 Internal Coolant**  
• Drilling and Milling Head  
• Offset Radial / LH - RH, CC  
• Collet Chuck, ER20  
• **PRECI-FLEX®**



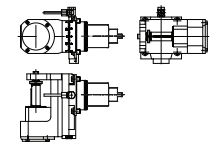
**7.073.606 External Coolant**  
• Drilling and Milling Head  
• Angular Adjustable, CC  
• Collet Chuck, ER16



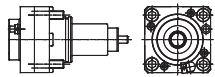
**7.075.684 External Coolant**  
• Drilling and Milling Head  
• Angular, Double Sided, CC  
• Collet Chuck, ER20  
• **PRECI-FLEX®**  
• Centerline : 70mm



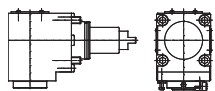
**7.077.985 External Coolant**  
• Drilling and Milling Head  
• Axial, Dual Collet Chuck, CC  
• Collet Chuck, ER16



**7.076.440 External Coolant**  
• Gear Hobber  
• Adjustable  $\pm 20^\circ$ , CC  
• Arbor Size 22mm

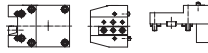


**7.078.613 External Coolant**  
**7.078.580 Internal Coolant**  
• Drilling and Milling Head  
• Axial, Straight, CC  
• **Compacto C3®**

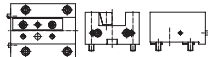


**7.078.626 External Coolant**  
**7.078.630 Internal Coolant**  
• Drilling and Milling Head  
• Radial / LH - RH, CC  
• **Compacto C3®**

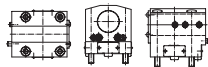
**BMT45**  
**SL15 (M) (Cont.)**



**7.074.610 External Coolant**  
• OD Turning Tool Holder  
• Left Hand Offset  
• 20mm Shank  
• Available in 3/4"



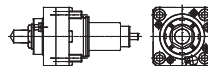
**7.074.616 External Coolant**  
• Face Turning Tool Holder  
• Left Hand / Right Hand  
• 20mm Shank  
• Available in 3/4"



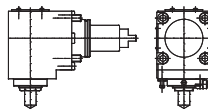
**7.074.255 Ext & Int Coolant**  
• Boring Bar Holder  
• Left Hand / Right Hand  
• 32mm Bore  
• Available in 1 1/4"

**BMT55**

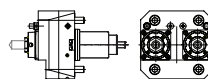
**SL20 (MC) / SLV100 / SL1500 (M) /**  
**SL2000 (M) / SL200 (SY) /**  
**SL20BMC - BB**



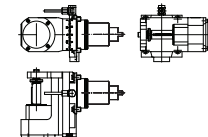
**7.073.118 External Coolant**  
**7.073.360 Internal Coolant**  
• Drilling and Milling Head  
• Axial, Straight, CC  
• Collet Chuck, ER25  
• **PRECI-FLEX®**



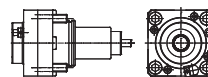
**7.071.730 External Coolant**  
• Drilling and Milling Head  
• Radial / LH - RH, CC  
• Collet Chuck, ER25  
• **PRECI-FLEX®**  
• Centerline : 60mm



**7.076.690 External Coolant**  
• Drilling and Milling Head  
• Axial, Dual Collet Chuck, CC  
• Collet Chuck, ER20  
• **PRECI-FLEX®**



**7.076.300 External Coolant**  
• Gear Hobber  
• Adjustable  $\pm 20^\circ$ , CC  
• Arbor Size 22mm

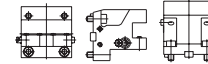


**7.077.600 External Coolant**  
**7.077.605 Internal Coolant**  
• Drilling and Milling Head  
• Axial, Straight, CC  
• **Compacto C3®**

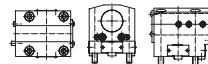


**7.073.995 External Coolant**  
• OD Turning Tool Holder  
• Left Hand Offset  
• 25mm Shank  
• Available in 1"

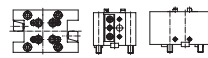
**BMT55**  
**SL20 (MC) / SLV100 / SL1500 (M) /**  
**SL2000 (M) / SL200 (SY) /**  
**SL20BMC - BB (Cont.)**



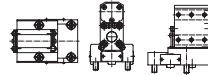
**7.077.312 External Coolant**  
• Face Turning Tool Holder  
• Left Hand / Right Hand  
• 1" (25.4mm) Shank



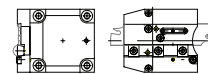
**7.077.314 Ext & Int Coolant**  
• Boring Bar Holder  
• Left Hand / Right Hand  
• 1 1/2" (38.1mm) Bore



**7.075.930 External Coolant**  
• Double OD Turning Tool Holder  
• Left Hand / Right Hand  
• 1" (25.4mm) Shank



**7.077.310 Ext & Int Coolant**  
• Double Boring Bar Holder  
• Left Hand / Right Hand  
• 3/4" (19.05mm) Bore

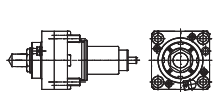


**7.077.206 Ext & Int Coolant**  
• Cut-Off Turning Tool Holder  
• Left Hand / Right Hand  
• 32mm Shank

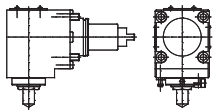
Don't see what you need? More tooling available on our website

**BMT65**

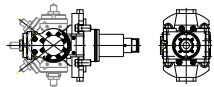
SLV500 / SL25 (BMC) / SL25 (ASY) /  
SL35 (MC) / SL2500 (M) / SL300 (M) /  
SL2500 (ASY) / SL2500 (BSY) /  
SL2500 (BY) / SL1000 (M) / SL2500  
(BSY) / SL2500 (BY) / SL3000 (M) /  
SL3000 (BM) / SL35 (M) / SL3500 /  
PL20 (M /LM) / PL25 (M) (LM) / PL35  
(M) (LM) / PL2000/2500 (MS) (SY) (Y)



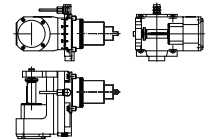
**7.073.240 External Coolant**  
**7.073.364 Internal Coolant**  
• Drilling and Milling Head  
• Axial, Straight, CC  
• Collet Chuck, ER32  
• **PRECI-FLEX®**



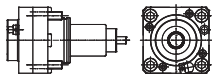
**7.073.271 External Coolant**  
**7.073.365 Internal Coolant**  
• Drilling and Milling Head  
• Radial / LH - RH, CC  
• Collet Chuck, ER32  
• **PRECI-FLEX®**  
• Centerline : 72mm



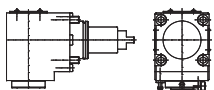
**7.073.608 External Coolant**  
• Drilling and Milling Head  
• Angular Adjustable, CC  
• Collet Chuck, ER32  
• **PRECI-FLEX®**



**7.077.165 External Coolant**  
• Gear Hobber  
• Adjustable ±20°, CC  
• Arbor Size 22mm



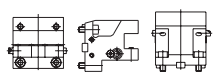
**7.076.640 External Coolant**  
**7.077.618 Internal Coolant**  
• Drilling and Milling Head  
• Axial, Straight, CC  
• **Compacto C4®**



**7.077.620 External Coolant**  
**7.077.622 Internal Coolant**  
• Drilling and Milling Head  
• Radial / LH - RH, CC  
• **Compacto C4®**  
• Centerline : 72mm

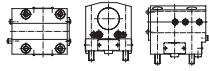


**7.077.308 External Coolant**  
• OD Turning Tool Holder  
• Left Hand Offset  
• 1" (25.4mm) Shank

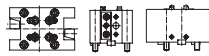


**7.077.306 External Coolant**  
• Face Turning Tool Holder  
• Left Hand / Right Hand  
• 1" (25.4mm) Shank

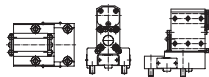
**BMT65 (Cont.)**



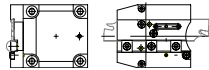
**7.077.304 Ext & Int Coolant**  
• Boring Bar Holder  
• Left Hand / Right Hand  
• 1 1/2" (38.1mm) Bore



**7.074.015 External Coolant**  
• Double OD Turning Tool Holder  
• Left Hand / Right Hand  
• 25mm Shank  
• Available in 1"



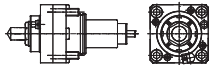
**7.077.302 Ext & Int Coolant**  
• Double Boring Bar Holder  
• Left Hand / Right Hand  
• 1" (25.4mm) Bores



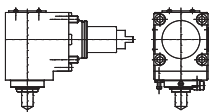
**7.075.950 Ext & Int Coolant**  
• Cut-Off Turning Tool Holder  
• Left Hand / Right Hand  
• 32mm Shank

**BMT75**

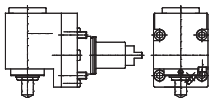
SL45 (MC) (XLY) / SL2200 (BB) /  
SL4500 (CXM) / SL3300 (BB) /  
SLV80 / PL45 / (LM) (XLM) (LY) /  
PL800VM (R/L) / SL5500 / SL1000 /  
SL5500A



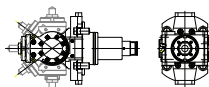
**7.073.245 External Coolant**  
**7.073.369 Internal Coolant**  
• Drilling and Milling Head  
• Axial, Straight, CC  
• Collet Chuck, ER40  
• **PRECI-FLEX®**



**7.076.850 External Coolant**  
**7.079.245 Internal Coolant**  
• Drilling and Milling Head  
• Radial / LH - RH, CC  
• Collet Chuck, ER40  
• **PRECI-FLEX®**  
• Centerline : 110mm



**7.076.565 External Coolant**  
• Drilling and Milling Head  
• Offset Radial / LH - RH, CC  
• Collet Chuck, ER32  
• **PRECI-FLEX®**  
• Centerline : 100mm



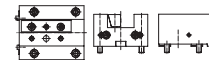
**7.073.609 External Coolant**  
• Drilling and Milling Head  
• Angular Adjustable, CC  
• Collet Chuck, ER32  
• **PRECI-FLEX®**



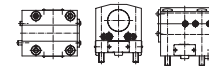
**7.074.632 External Coolant**  
• OD Turning Tool Holder  
• Left Hand Offset  
• 25mm Shank  
• Available in 1"

**BMT75**

SL45 (MC) (XLY) / SL2200 (BB) /  
SL4500 (CXM) / SL3300 (BB) / SLV80 /  
PL45 / (LM) (XLM) (LY) PL800VM (R/L)  
/ SL5500 / SL1000 / SL5500A (Cont.)



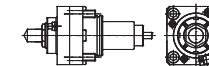
**7.074.628 External Coolant**  
• Face Turning Tool Holder  
• Left Hand / Right Hand  
• 25mm Shank  
• Available in 1"



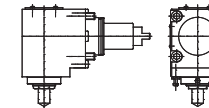
**7.077.304 Ext & Int Coolant**  
• Boring Bar Holder  
• Left Hand / Right Hand  
• 60mm Bore  
• Available in 2 1/2"

**BMT85**

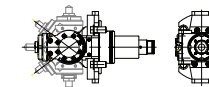
SL65 (MC) / SL6500A / SL1000 /  
SL6500 / SL 65 (MC) / SL3200 /  
SLV1000R



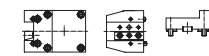
**7.073.250 External Coolant**  
**7.073.371 Internal Coolant**  
• Drilling and Milling Head  
• Axial, Straight, CC  
• Collet Chuck, ER50  
• **PRECI-FLEX®**



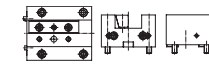
**7.073.277 External Coolant**  
**7.073.372 Internal Coolant**  
• Drilling and Milling Head  
• Radial / LH - RH, CC  
• Collet Chuck, ER50  
• **PRECI-FLEX®**  
• Centerline = 85mm



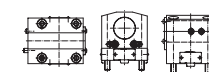
**7.072.536 External Coolant**  
• Drilling and Milling Head  
• Angular Adjustable  
• Collet Chuck, ER32  
• **PRECI-FLEX®**



**7.074.550 External Coolant**  
• OD Turning Tool Holder  
• Left Hand Offset  
• 25mm Shank  
• Available in 1"



**7.074.630 External Coolant**  
• Face Turning Tool Holder  
• Left Hand / Right Hand  
• 25mm Shank  
• Available in 1"



**7.074.635 Ext & Int Coolant**  
• Boring Bar Holder  
• Left Hand / Right Hand  
• 60mm Bore  
• Available in 2 1/2"