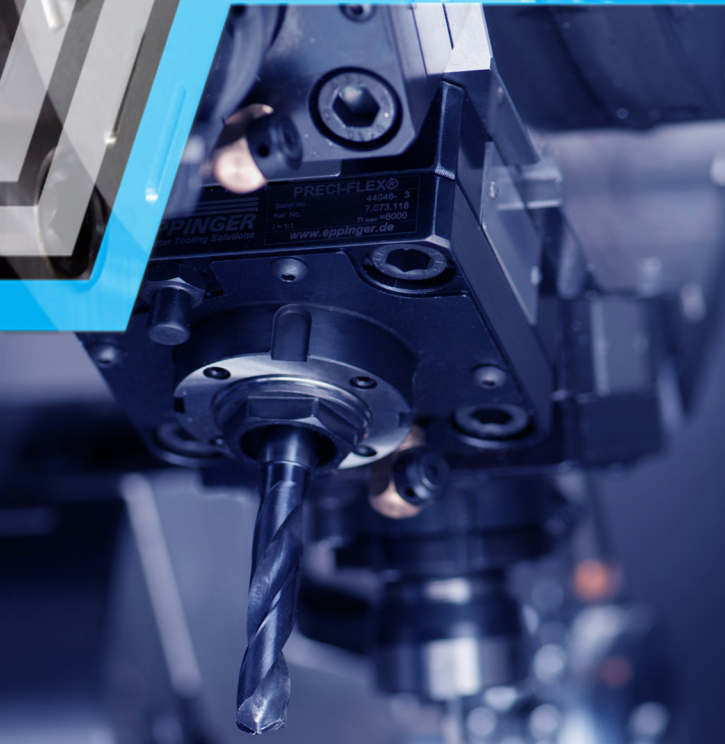




EXSYS® **EPPINGER**

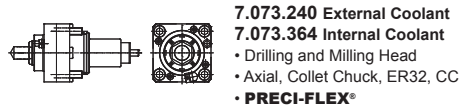
Tooling Catalog



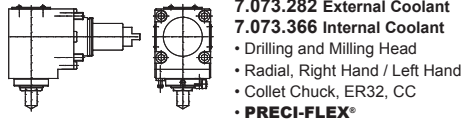
HURCO®

EXSYS Automation, Inc.
15200 Citrus Country Drive
Dade City, Florida 33523
P : 352.588.4345 F : 352.588.4821
www.exsysautomation.com

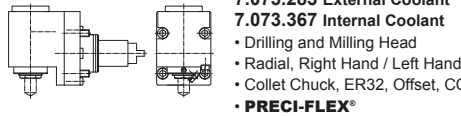
TMX8 / TMX10 (MY,MYS) - (BMT65)



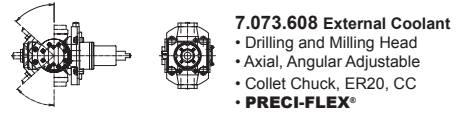
7.073.240 External Coolant
7.073.364 Internal Coolant
 • Drilling and Milling Head
 • Axial, Collet Chuck, ER32, CC
 • **PRECI-FLEX®**



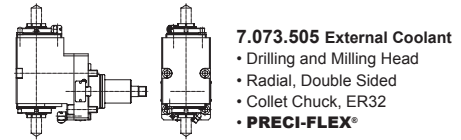
7.073.282 External Coolant
7.073.366 Internal Coolant
 • Drilling and Milling Head
 • Radial, Right Hand / Left Hand
 • Collet Chuck, ER32, CC
 • **PRECI-FLEX®**



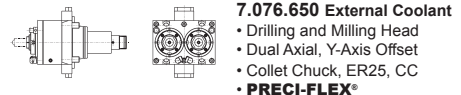
7.073.283 External Coolant
7.073.367 Internal Coolant
 • Drilling and Milling Head
 • Radial, Right Hand / Left Hand
 • Collet Chuck, ER32, Offset, CC
 • **PRECI-FLEX®**



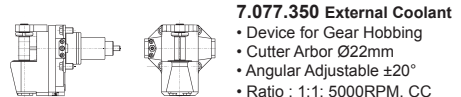
7.073.608 External Coolant
 • Drilling and Milling Head
 • Axial, Angular Adjustable
 • Collet Chuck, ER20, CC
 • **PRECI-FLEX®**



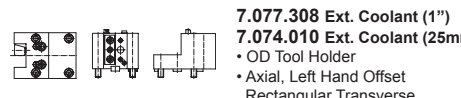
7.073.505 External Coolant
 • Drilling and Milling Head
 • Radial, Double Sided
 • Collet Chuck, ER32
 • **PRECI-FLEX®**



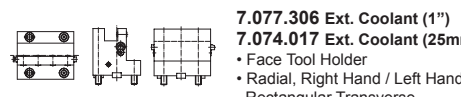
7.076.650 External Coolant
 • Drilling and Milling Head
 • Dual Axial, Y-Axis Offset
 • Collet Chuck, ER25, CC
 • **PRECI-FLEX®**



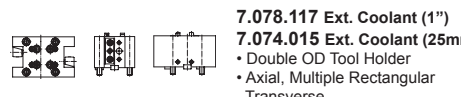
7.077.350 External Coolant
 • Device for Gear Hobbing
 • Cutter Arbor Ø22mm
 • Angular Adjustable ±20°
 • Ratio : 1:1; 5000RPM, CC
 • Torque : 25Nm



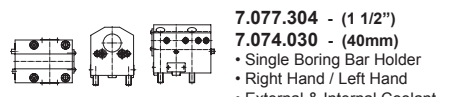
7.077.308 Ext. Coolant (1")
7.074.010 Ext. Coolant (25mm)
 • OD Tool Holder
 • Axial, Left Hand Offset
 • Rectangular Transverse



7.077.306 Ext. Coolant (1")
7.074.017 Ext. Coolant (25mm)
 • Face Tool Holder
 • Radial, Right Hand / Left Hand
 • Rectangular Transverse

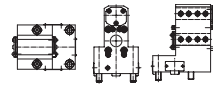


7.078.117 Ext. Coolant (1")
7.074.015 Ext. Coolant (25mm)
 • Double OD Tool Holder
 • Axial, Multiple Rectangular
 • Transverse



7.077.304 - (1 1/2")
7.074.030 - (40mm)
 • Single Boring Bar Holder
 • Right Hand / Left Hand
 • External & Internal Coolant

TMX8 / TMX10 (MY,MYS) - (BMT65) (Cont.) TMM10 / TMX8 / TMX10 (MY,MYS) (VDI 40)

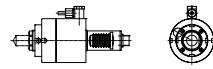


7.077.302 - (1")
7.074.035 - (25mm)
 • Double Boring Bar Holder
 • Right Hand / Left Hand
 • External & Internal Coolant

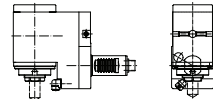


7.075.950 Ext / Int Coolant
 • Cut-off Tool Holder
 • Axial, Right Hand / Left Hand
 • System Iscar and Coromant

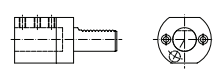
TMM8 (VDI 30)



3.200.625 External Coolant
3.200.690 Internal Coolant
 • Axial Collet Chuck ER25
 • **PRECI-FLEX®**



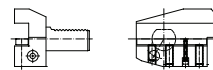
3.200.671 External Coolant
3.200.743 Internal Coolant
 • Radial, Left Hand - Right Hand
 • Short Collet Chuck, ER25
 • **PRECI-FLEX®**



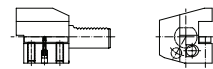
212.015.2XX
 • Boring Bar Holder DIN 69880
 • Type E2 for inch tools
 • External and Internal Coolant
 • Available in 5/16" - 1 1/2"



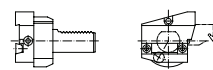
212.105.250 External Coolant
 • Rectangular Transverse Tool Holder
 • Overhead, Right Hand, Short
 • Type B3 for Inch Tools



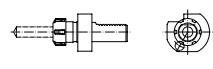
222.105.250 External Coolant
 • Rectangular Transverse Tool Holder
 • Overhead, Right Hand, Long
 • Type B7 for Inch Tools



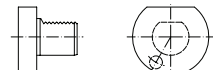
212.125.250 External Coolant
 • Rectangular Lengthwise Tool Holder
 • Overhead, Right Hand
 • Type C3 for Inch Tools



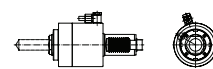
212.665.220
 • Cut-off tool holder
 • Height Adjustable
 • Type C, DIN 69880



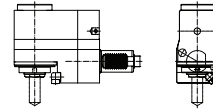
222.040.090 = ER25
222.035.220 = ER32
222.045.220 = ER40
 • Collet chuck DIN 69880-E4 30x25
 • Type E4 for Collets
 • ER 25 Collet



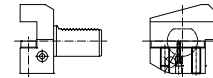
212.500.150 Form E4
 • Blanking Plug Type Z2
 • DIN 69880-Z2-30 (steel)



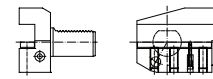
4.200.870 External Coolant
4.200.875 Internal Coolant
 • Axial Collet Chuck ER32
 • **PRECI-FLEX®**



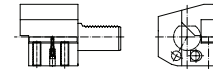
External Coolant
9.709.267 Internal Coolant
 • Radial, Left Hand - Right Hand
 • Short Collet Chuck, ER32
 • **PRECI-FLEX®**



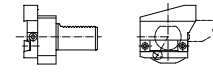
213.105.250 External Coolant
 • Rectangular Transverse Tool Holder
 • Overhead, Right Hand, Short
 • Type B3 for Inch Tools



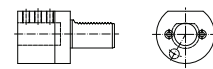
223.105.250 External Coolant
 • Rectangular Transverse Tool Holder
 • Overhead, Right Hand, Long
 • Type B7 for Inch Tools



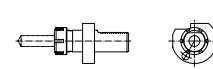
213.125.250 External Coolant
 • Rectangular Lengthwise Tool Holder
 • Overhead, Right Hand
 • Type C3 for Inch Tools



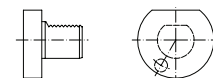
213.640.220
 • Cut-off Tool Holder
 • Height Adjustable
 • Type C, DIN 69880



212.015.2XX
 • Boring Bar Holder DIN 69880
 • Type E2 for Inch Tools
 • External and Internal coolant
 • Available in 3/8" - 2"



223.040.090 = ER25
223.035.220 = ER32
223.045.220 = ER40
 • Collet chuck DIN 69880-E4-40x32
 • Type E4 for Collets DIN 6499



213.500.150 Form E4
 • Blanking Plug Type Z2
 • DIN 69880-Z2-40 (steel)

Don't see what you need? More tooling available on our website